

Batch Rebuild Training

Batch Rebuild_Training.zip



Batch Rebuild - Overview

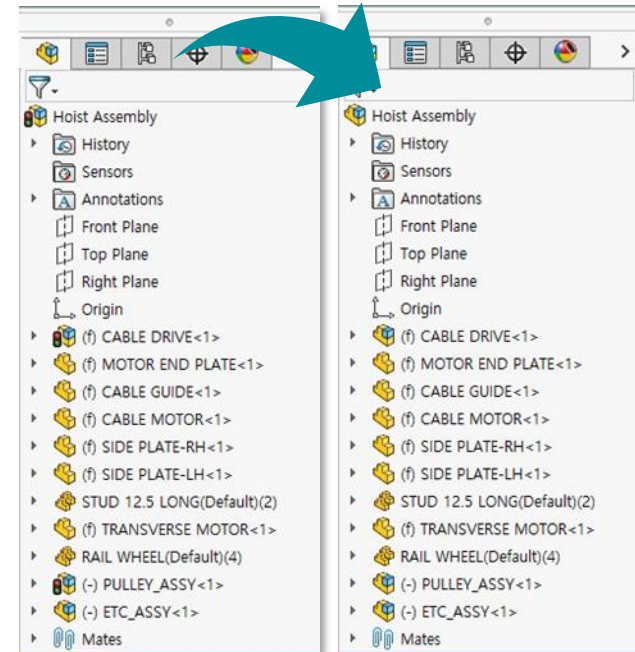
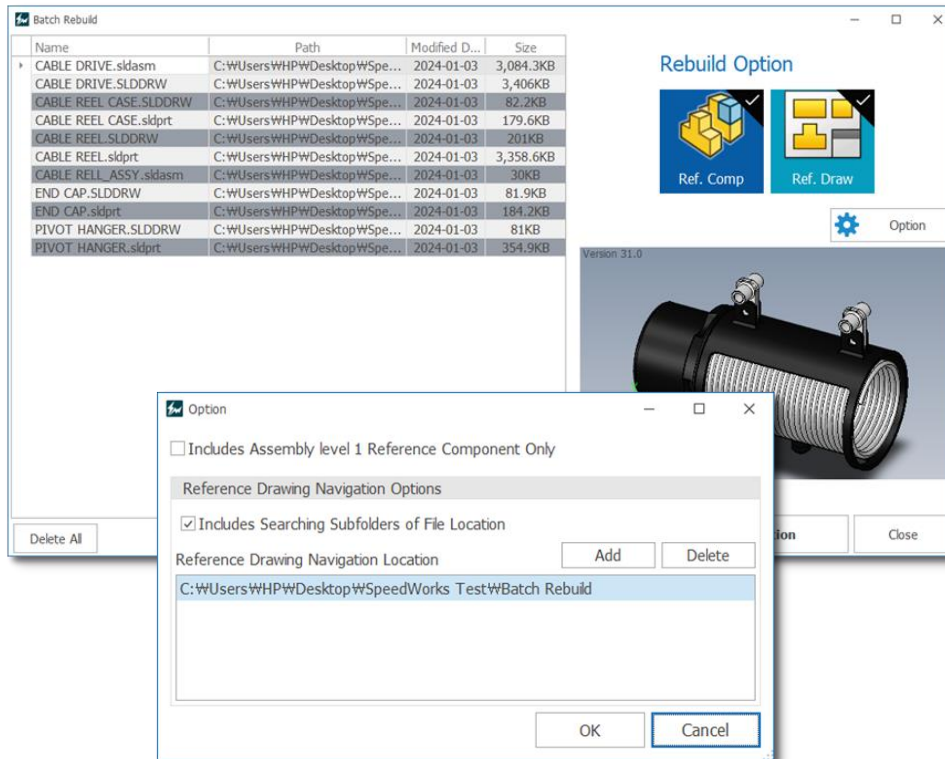
Main Functions

- Perform batch rebuild of large amounts of files
- Perform rebuild by exploring reference parts and reference drawings in batches
- Perform rebuild from assembly sub-component level to higher level

Benefits

- A large amount of files can be rebuilt in batches, reducing simple repetitive tasks
- Reduce work time by automatically searching reference parts and reference drawings
- Increased convenience of file version management by rebuilding the assembly from the lower part level to the upper level.

Course Objective: Follow the simple step-by-step instructions and learn how to use Batch Rebuild.

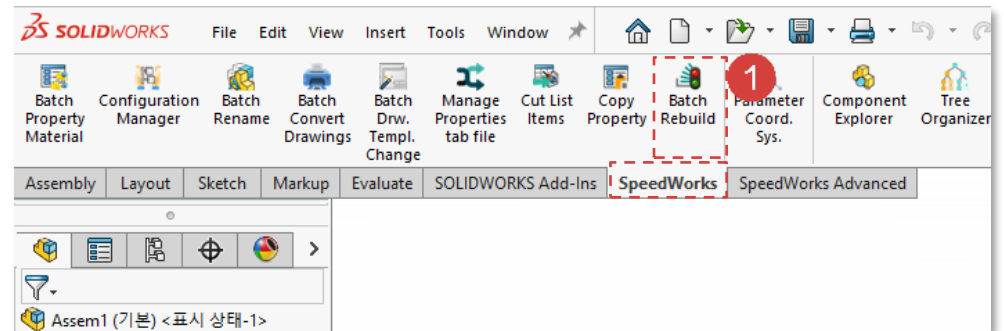
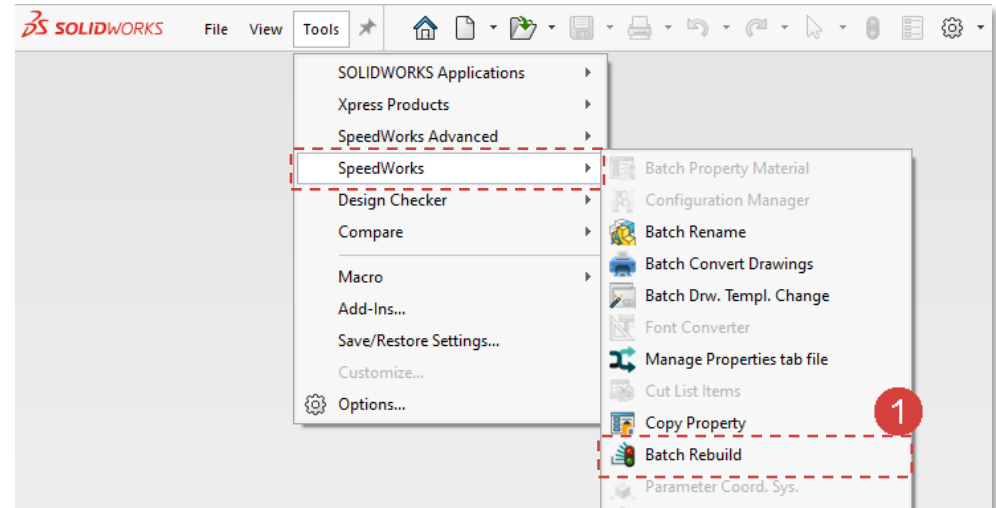


Batch Rebuild - Execute

Work on the part with the red circle (1) following instructions by yourself.
The part with the black square (1) is an additional explanation or a reference.

- 1 Click **SOLIDWORKS – [Tool] tab - [SpeedWorks]**
- **[Batch Rebuild]** to execute function.

or in Part/Assembly/Drawing files click
[SpeedWorks]tab - [Batch Rebuild] to execute
function.

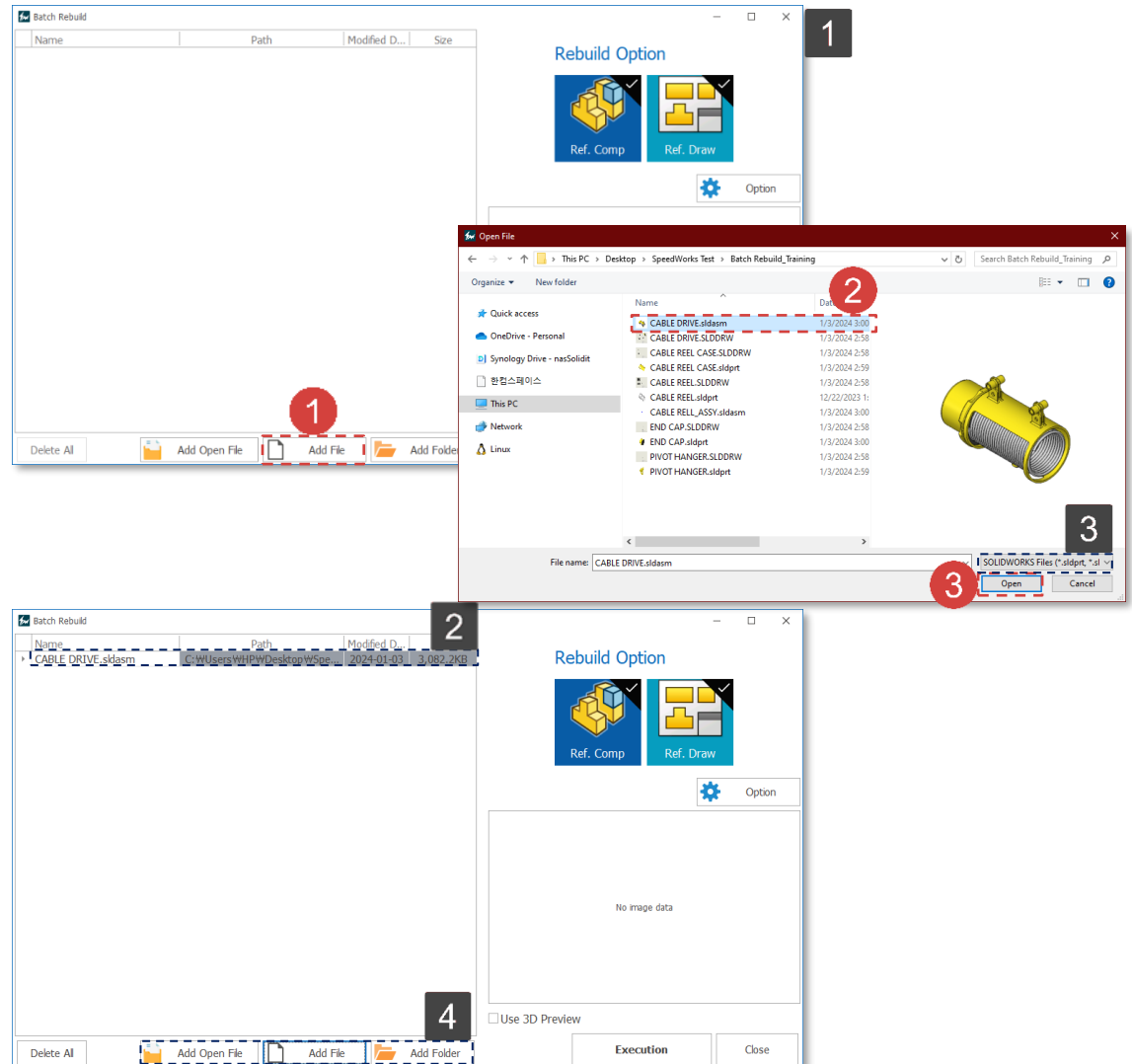


※ You can download example files at Support page in
SpeedWorks Homepage(<https://speedworks.info>).

Batch Rebuild - Add File

- 1 Click to **[Add File]**.
- 2 Select '**CABLE DRIVE.sldasm**' file among the sample files.
- 3 Click **[Open]** button to add file.

- 1 This is Batch Rebuild screen.
- 2 File addition is complete.
- 3 You can add any part, assembly, and drawing file.
- 4 Provides a variety of file add tools.

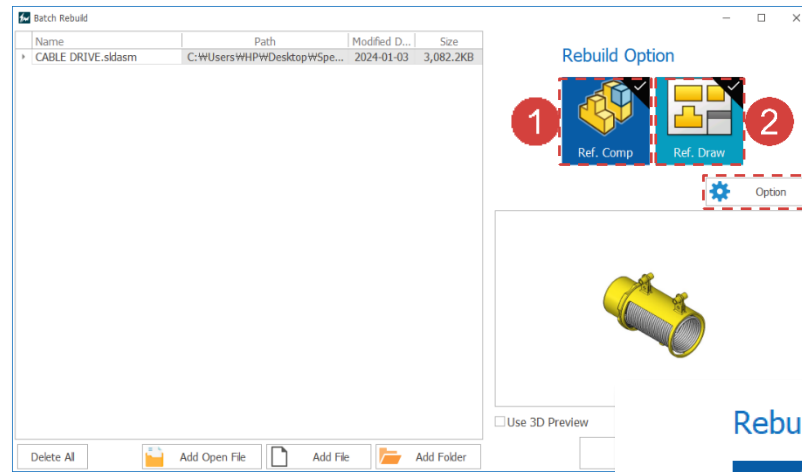


Work on the part with the red circle (1) following instructions by yourself.
The part with the black square (1) is an additional explanation or a reference.

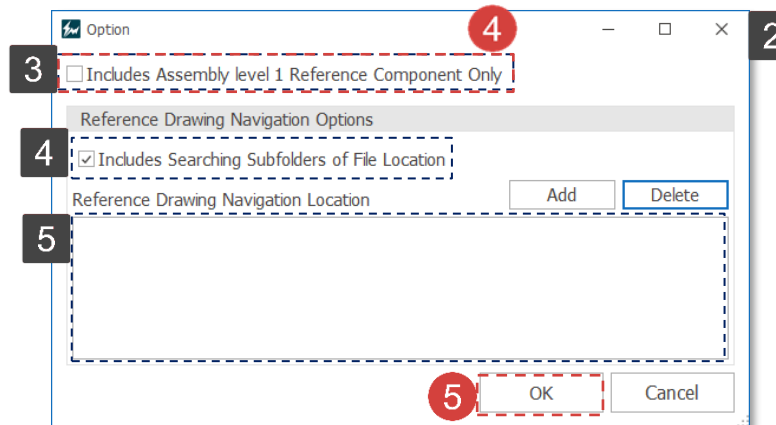
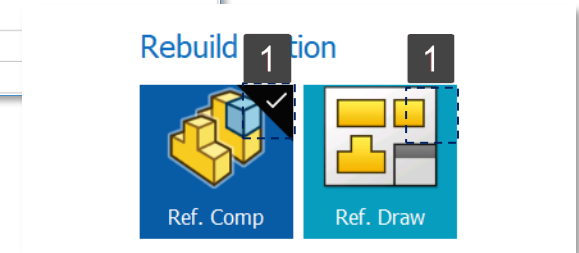
Batch Rebuild - Select Option

Work on the part with the red circle (1) following instructions by yourself.
The part with the black square (1) is an additional explanation or a reference.

- 1 Select the [Ref. Comp].
- 2 Select the [Ref. Draw].
- 3 Click [Option] button.
- 4 Uncheck [Includes Assembly level 1 Reference Component Only].
- 5 Click [OK] button.



- 1 Options are checked and unchecked.
- 2 This screen is an option screen.
- 3 When auto-searching for assembly referenced parts, only level 1 referenced parts are rebuilt.
- 4 When automatically searching for drawings referenced in 3D files, drawing files in subfolders are also searched.
- 5 If you add a folder path to [Reference Drawing Navigation Location], that location will be navigated to when searching for reference drawings.



Batch Rebuild - Rebuild List

Work on the part with the red circle (1) following instructions by yourself.
The part with the black square (1) is an additional explanation or a reference.

1 Click **[Execution]** button.

1 This screen is a rebuild list screen.

2 **[Ref. Comp]** The parts used in the assembly are searched according to the options.

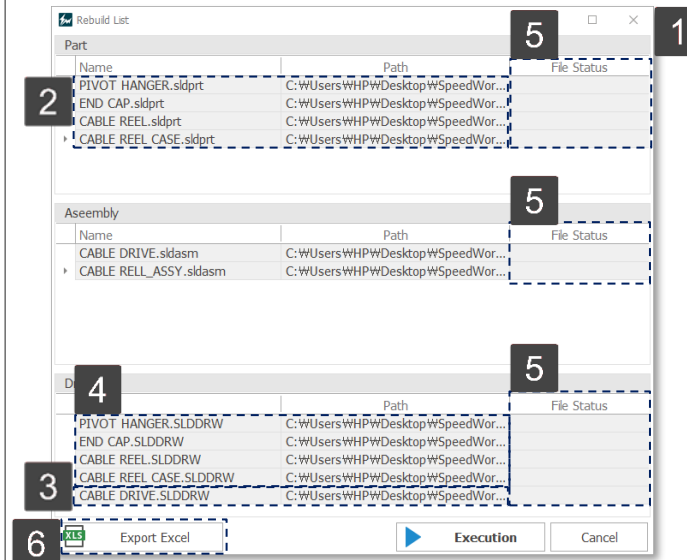
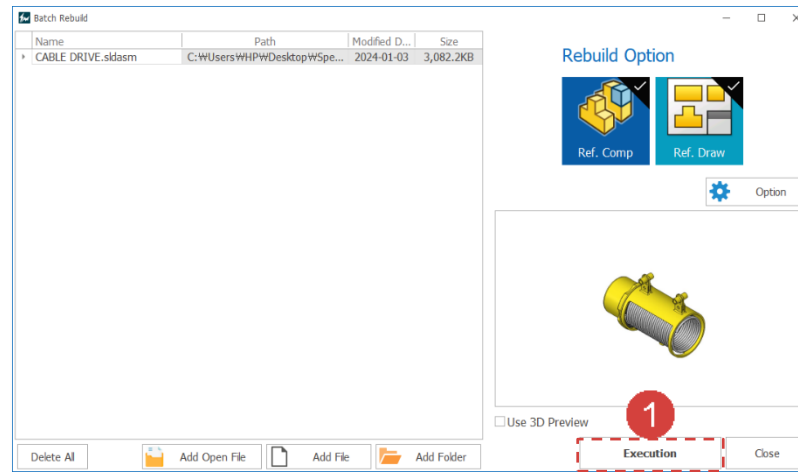
3 Drawings referenced in the file list are searched according to **[Ref. Draw]** option.

4 When both the **[Ref. Comp]** and **[Ref. Draw]** options are activated, explore the drawing of the reference part as well.

5 You can check whether a file has a read-only status using the File Status column.

6 You can save the rebuild list as Excel files using **[Export Excel]**

7 This is a rebuild list Excel file Export Excel.

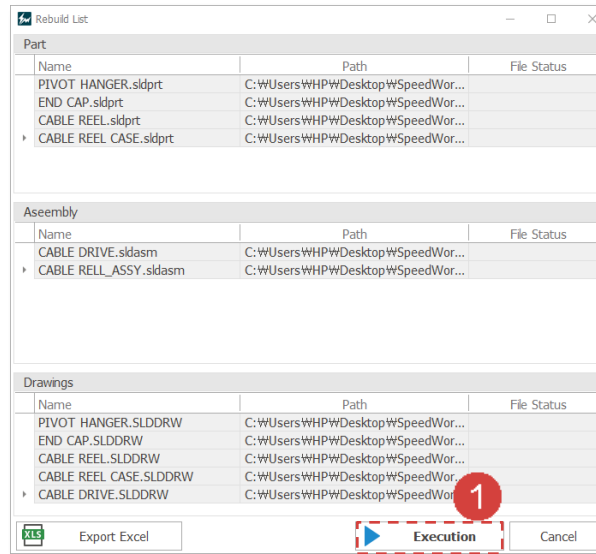


1	A	B	C	D
2	Name	File Type	Path	File Status
3	PIVOT HANGER.sldprt	Part	C:\Users\WHP\Desktop\SpeedW...	
4	END CAP.sldprt	Part	C:\Users\WHP\Desktop\SpeedW...	
5	CABLE REEL.sldprt	Part	C:\Users\WHP\Desktop\SpeedW...	
6	CABLE REEL CASE.sldprt	Part	C:\Users\WHP\Desktop\SpeedW...	
7	CABLE DRIVE.sldasm	Assembly	C:\Users\WHP\Desktop\SpeedW...	
8	CABLE REEL_ASSY.sldasm	Assembly	C:\Users\WHP\Desktop\SpeedW...	
9	PIVOT HANGER.SLDDRW	Drawings	C:\Users\WHP\Desktop\SpeedW...	
10	END CAP.SLDDRW	Drawings	C:\Users\WHP\Desktop\SpeedW...	
11	CABLE REEL.SLDDRW	Drawings	C:\Users\WHP\Desktop\SpeedW...	
12	CABLE REEL CASE.SLDDRW	Drawings	C:\Users\WHP\Desktop\SpeedW...	
13	CABLE DRIVE.SLDDRW	Drawings	C:\Users\WHP\Desktop\SpeedW...	

Batch Rebuild - Execute Rebuild

Work on the part with the red circle (1) following instructions by yourself.
The part with the black square (1) is an additional explanation or a reference.

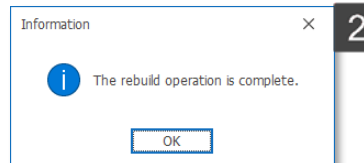
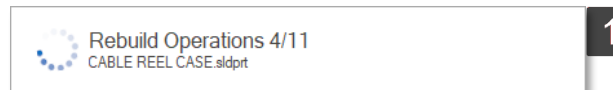
1 Click **[Execution]** button.



1 You can check the progress .

2 When the task is complete, a completion message window will appear.

3 After rebuild, it will be automatically saved.



Name	Date modified	Type	Size
▶ CABLE_DRIVE.sldasm	1/4/2024 3:17 PM	SOLIDWORKS Ass...	3,011 KB
▶ CABLE_DRIVE.SLDDRW	1/4/2024 3:17 PM	SOLIDWORKS Dra...	3,326 KB
▶ CABLE_REEL_CASE.SLDDRW	1/4/2024 3:17 PM	SOLIDWORKS Dra...	80 KB
▶ CABLE_REEL_CASE.sldprt	1/4/2024 3:17 PM	SOLIDWORKS Part...	174 KB
▶ CABLE_REEL.SLDDRW	1/4/2024 3:17 PM	SOLIDWORKS Dra...	196 KB
▶ CABLE_REEL.sldprt	1/4/2024 3:17 PM	SOLIDWORKS Part...	3,278 KB
▶ CABLE_REEL_ASSY.sldasm	1/4/2024 3:17 PM	SOLIDWORKS Ass...	29 KB
▶ END_CAP.SLDDRW	1/4/2024 3:17 PM	SOLIDWORKS Dra...	80 KB
▶ END_CAP.sldprt	1/4/2024 3:17 PM	SOLIDWORKS Part...	179 KB
▶ PIVOT_HANGER.SLDDRW	1/4/2024 3:17 PM	SOLIDWORKS Dra...	80 KB
▶ PIVOT_HANGER.sldprt	1/4/2024 3:17 PM	SOLIDWORKS Part...	346 KB